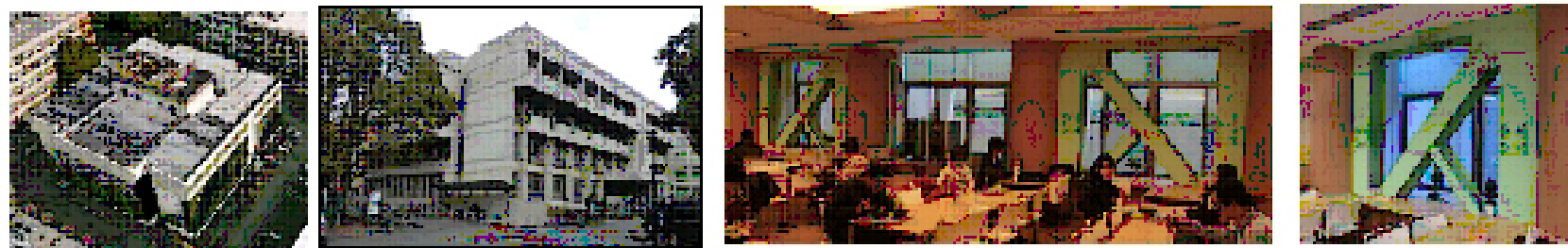


GEM Building Taxonomy Report

Scawthorn Japan - 9

Scawthorn



Taxonomy string:

DX /CR+CIP /LFBR+DUC /DY /CR+CIP /LFBR+DUC /YAPP:2007 /HEX:4+HBEX:1+HFEX:1+HD:0 /EDU+EDU3 /BPD /PLFR /IRIR+IRPP:REC /EWC /RSH1+RMT3+RC+RWCP /FC+FWCP /FOSN

Material type (direction 1):

Concrete, reinforced

Material properties (direction 1):

Lateral load-resisting system (direction 1):

Braced frame

Material type (direction 2):

Concrete, reinforced

Material properties (direction 2):

Lateral load-resisting system (direction 2):

Braced frame

Foundations:

Shallow foundation, with no lateral capacity

Type of Irregularity:

Irregular structure

Plan structural irregularity - primary:

Re-entrant corner

Plan structural irregularity - secondary:

No irregularity

Roof shape:

Flat

Roof system material:

Concrete

Roof connections:

Roof-wall diaphragm connection present

Floor system material:

Concrete

Floor connections:

Floor-wall diaphragm connection present

Exterior walls material:

Concrete

Date of construction:

Approximate date of construction or retrofit 2007

Number of storeys above the ground:

Exact number of storeys 4

Height of the grade above ground floor:

Exact height above grade 1

Occupancy type - general:

Education

Country:

Japan

Summary:

Material technology (direction 1):

Cast-in-place concrete

Material technology (additional, direction 1):

System ductility (direction 1):

Ductile

Material technology (direction 2):

Cast-in-place concrete

Material technology (additional, direction 2):

System ductility (direction 2):

Ductile

Plan shape:

Rectangular, solid

Building position within a block:

Detached building

Vertical structural irregularity - primary:

No irregularity

Vertical structural irregularity - secondary:

Roof covering:

Membrane roofing

Roof system type:

Concrete, unknown

Floor system type:

Concrete, unknown

Number of storeys below the ground:

Exact number of storeys 1

Slope of the ground (for buildings on slopes):

Slope of the ground 0

Occupancy type - detail:

College/university, offices and/or classrooms

Region (province, state, etc.):

Kyoto Sakyo-ku

Typical 1960s RC shear wall university building, retrofitted with steel braces in 2000s